

**Thrombin R Polyclonal Antibody**  
**Catalog # AP72828****Specification**

---

**Thrombin R Polyclonal Antibody - Product Information**

Application	WB, IHC-P
Primary Accession	<a href="#">P25116</a>
Reactivity	Human
Host	Rabbit
Clonality	Polyclonal

**Thrombin R Polyclonal Antibody - Additional Information****Gene ID** 2149**Other Names**

F2R; CF2R; PAR1; TR; Proteinase-activated receptor 1; PAR-1; Coagulation factor II receptor; Thrombin receptor

**Dilution**WB~~Western Blot: 1/500 - 1/2000. ELISA: 1/5000. Not yet tested in other applications.  
IHC-P~~N/A**Format**

Liquid in PBS containing 50% glycerol, 0.5% BSA and 0.09% (W/V) sodium azide.

**Storage Conditions**

-20°C

**Thrombin R Polyclonal Antibody - Protein Information****Name** F2R ([HGNC:3537](#))**Synonyms** CF2R, PAR1, TR**Function**

High affinity receptor that binds the activated thrombin, leading to calcium release from intracellular stores (PubMed:<a href="http://www.uniprot.org/citations/1672265" target="\_blank">1672265</a>, PubMed:<a href="http://www.uniprot.org/citations/8136362" target="\_blank">8136362</a>). The thrombin-activated receptor signaling pathway is mediated through PTX-insensitive G proteins, activation of phospholipase C resulting in the production of 1D-myo-inositol 1,4,5- trisphosphate (InsP3) which binds to InsP3 receptors causing calcium release from the stores (By similarity). In astrocytes, the calcium released into the cytosol allows the Ca(2+)-dependent release of L- glutamate into the synaptic cleft through BEST1, that targets the neuronal postsynaptic GRIN2A/NMDAR receptor resulting in the synaptic plasticity regulation (By similarity). May play a role in platelets activation and in vascular development (PubMed:<a href="http://www.uniprot.org/citations/10079109" target="\_blank">10079109</a>). Mediates up-regulation of pro-inflammatory cytokines, such as MCP-1/CCL2 and IL6, triggered by coagulation

factor Xa (F10) in cardiac fibroblasts and umbilical vein endothelial cells (PubMed:<a href="http://www.uniprot.org/citations/30568593" target="\_blank">30568593</a>, PubMed:<a href="http://www.uniprot.org/citations/34831181" target="\_blank">34831181</a>).

#### Cellular Location

Cell membrane {ECO:0000250|UniProtKB:P26824}; Multi-pass membrane protein {ECO:0000250|UniProtKB:P26824}

#### Tissue Location

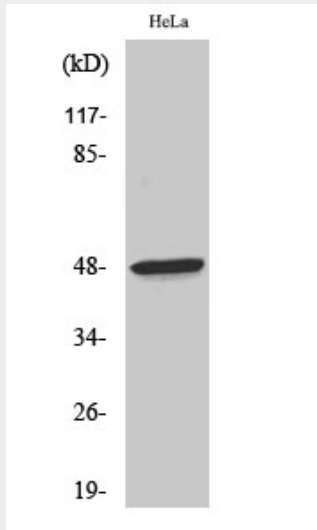
Platelets and vascular endothelial cells.

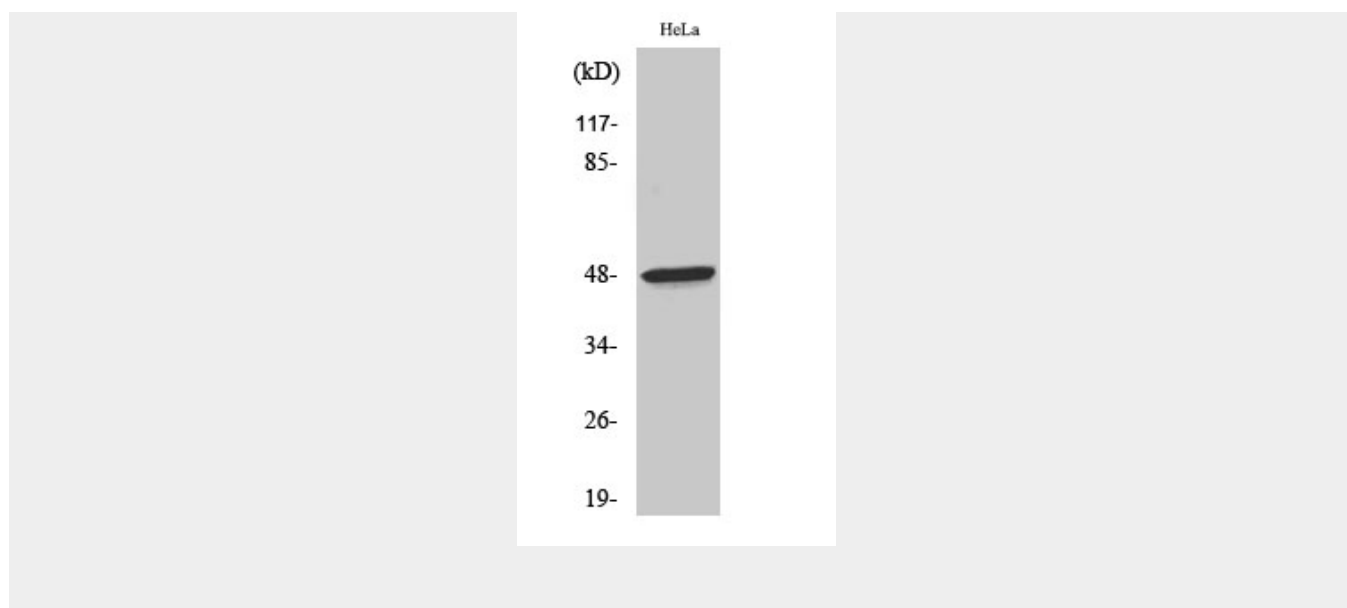
### Thrombin R Polyclonal Antibody - Protocols

Provided below are standard protocols that you may find useful for product applications.

- [Western Blot](#)
- [Blocking Peptides](#)
- [Dot Blot](#)
- [Immunohistochemistry](#)
- [Immunofluorescence](#)
- [Immunoprecipitation](#)
- [Flow Cytometry](#)
- [Cell Culture](#)

### Thrombin R Polyclonal Antibody - Images





### Thrombin R Polyclonal Antibody - Background

High affinity receptor for activated thrombin coupled to G proteins that stimulate phosphoinositide hydrolysis. May play a role in platelets activation and in vascular development.